



KAROO

TAXIDERMY

Creating lasting impressions since 1998

Physical Address: 15 Van der Bijl Street,
Industrial Area, Graaff-Reinet, SOUTH AFRICA
Postal Address: P O Box 231, Graaff- Reinet,
6280, SOUTH AFRICA
Tel: + 27 49 892 6151 • **Fax:** + 27 49 892 5993
Reg. Nr. 2002/037954/23
VAT Reg. Nr. 493 0202 694

DIP & PACK PROCESSING PROCEDURES

DIP & PACK PROCEDURES WITH REGARDS TO TROPHIES INTENDED FOR TAXIDERMY MOUNTS

During the taxidermy mounting process by your local Taxidermist, only the skull cap (the part of the skull where the horns are attached) is used, not the entire skull.

(Refer to the pictographic illustration on page 2).

To prepare, and ensure a far more effective system of processing your Dip & Pack trophy shipment, we would recommend that you allow us to “skull cap” your trophies which you are planning to have taxidermy mounted (shoulder/wall pedestal/pedestal/full mounts) by your local taxidermist.

We will trim (skull cap) the skulls in such a way as to remove the excess bone matter and leave only the part required, so your taxidermist receives only the part of the skull he needs. Your taxidermist will still be able to precision trim the semi-prepared skull-capped skull to his exact requirements as may be dictated by his choice of manikin, etc.

By allowing us to trim (skull cap) your intended taxidermy mounts, we will be in a position to provide a more efficient service by ensuring the effective removal of all membrane, unwanted tissue, fats etc. and the skulls will also be degreased and prepared in a superior manner. Furthermore, these skulls will not run the risk of attracting bugs/insects in future years to come.

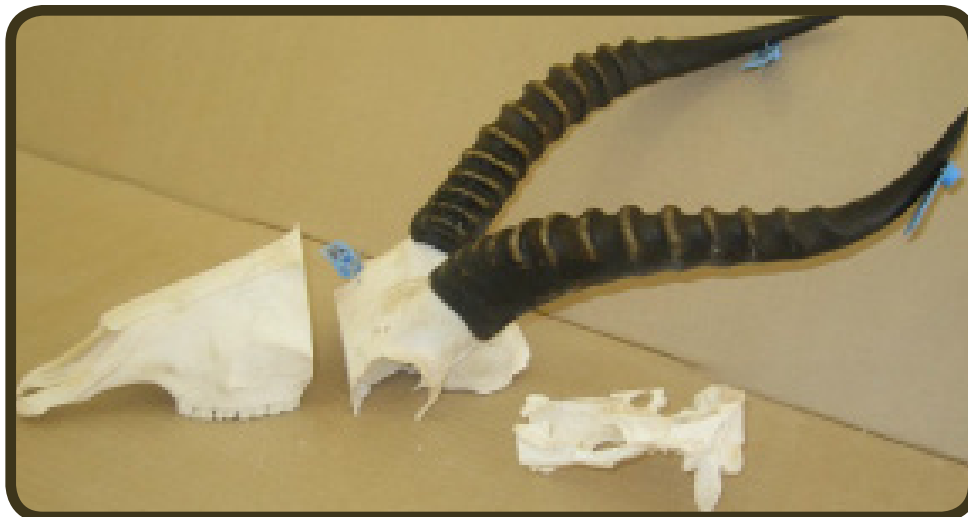
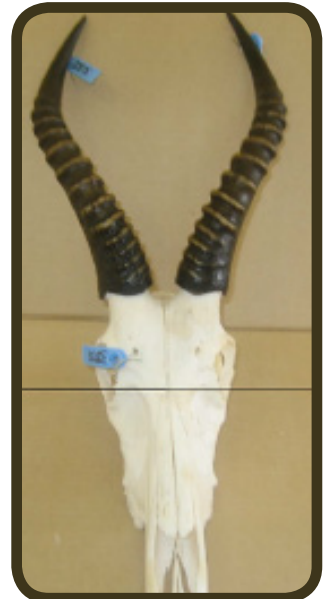
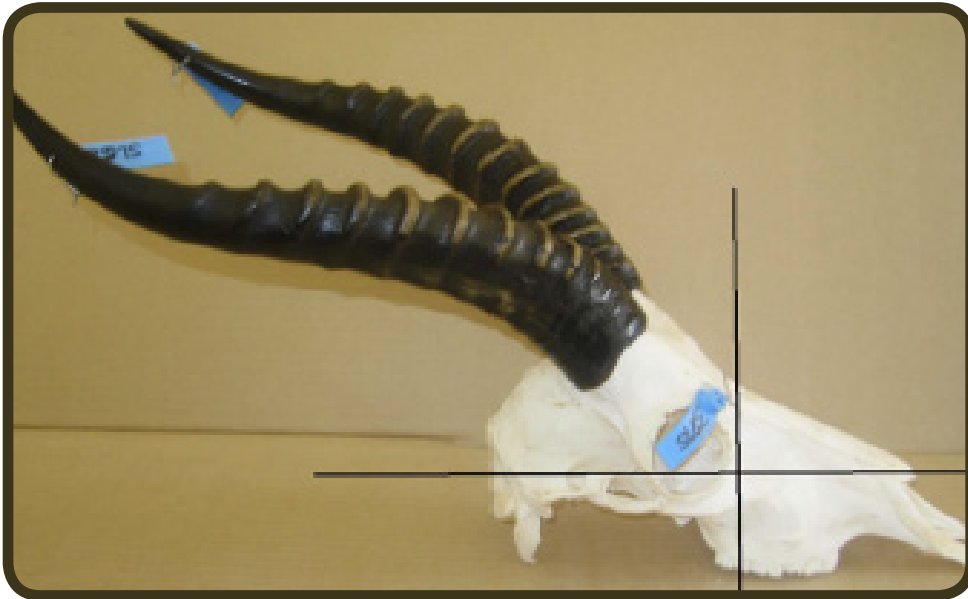
This will also allow for faster cleaning and drying time and therefore earlier delivery to you, reducing crate weight and ultimately a saving for you on shipping costs.

DIP & PACK PROCEDURES WITH REGARDS TO TROPHIES INTENDED FOR EUROPEAN MOUNTS

In case you prefer your local taxidermist to do a European Mount on specific trophies, please advise as soon as possible. This will enable us to prepare your skull in the appropriate manner for a European Mount, i.e. not skull-capped. This will ensure that the correct methods and procedures for European mounts are followed and that the important nose and lip bones are secured and wrapped correctly when being packed.

We would be most grateful if you could advise us at your earliest convenience how to proceed with your Dip & Pack order, so that we can prepare your trophies promptly and efficiently.

SKULL CAP PICTOGRAPHIC ILLUSTRATION



KAROO
TAXIDERMY

Creating lasting impressions
Since 1998

